

RNA FACULTY CANDIDATE SEMINAR

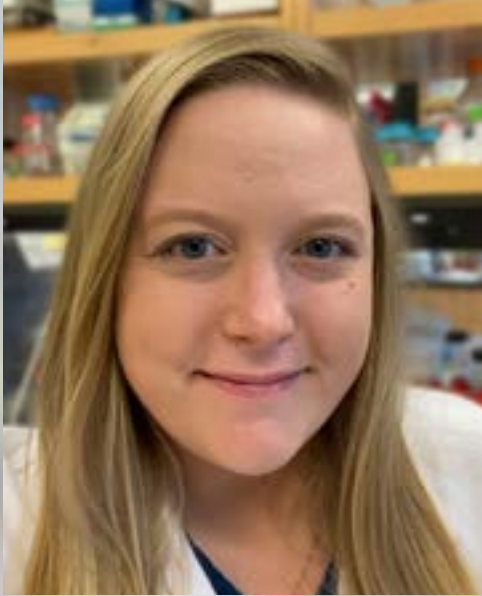


UNIVERSITY OF MICHIGAN
MEDICAL SCHOOL
MICHIGAN MEDICINE

Department of Biological Chemistry



LSA BIOPHYSICS
UNIVERSITY OF MICHIGAN



Mechanisms of co-transcriptional ribonucleoprotein assembly

Margaret 'Maggie' Rodgers, PhD

Postdoctoral Researcher
Johns Hopkins University

Monday, February 14, 2022

4:00 PM Hybrid

In-person: Biomedical Science Research Building (BSRB) ABC Seminar rooms

Zoom: <https://t.ly/nFVE>



CENTER FOR RNA BIOMEDICINE